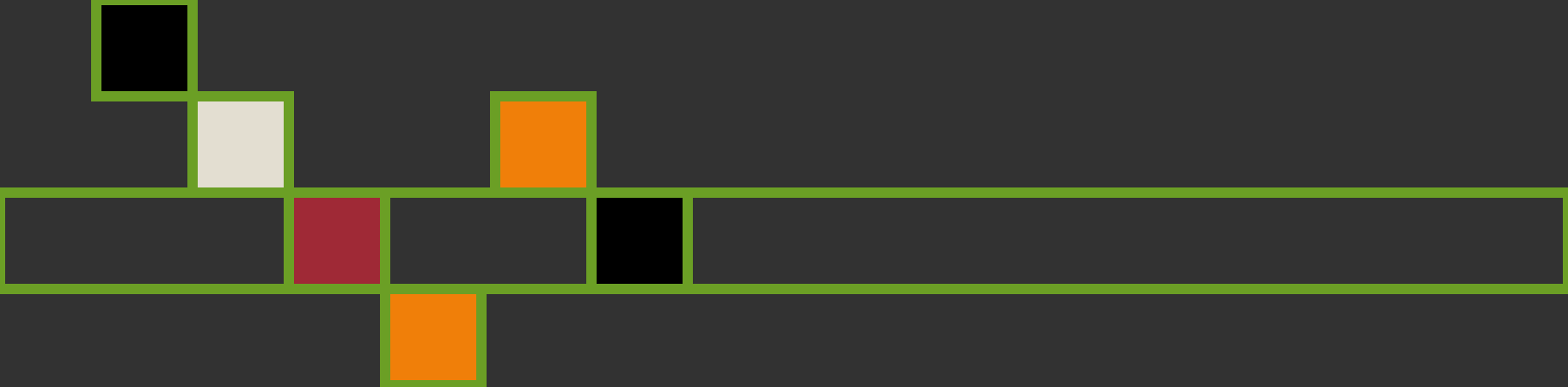




# Theories Informing Leadership





Developed from the Contents of  
Reginald Leon Green's




Practicing the Art of Leadership: A Problem-  
based Approach to Implementing  
the ISLLC Standards

Chapter 3



# The Theoretical Base

- 
- The behavior of school leaders is informed by a solid theoretical base.



# Theory



- A body of organized and tested knowledge that presents a systematic view of phenomena
- Explains the relationship between and among interrelated concepts, assumptions, and generalizations



# Theory

- Using theories, school leaders can describe, explain, and predict behavior.

# Some Major Theories Informing Leadership

- Organizational Theories
- Leadership Theories
- Motivational Theories
- Contemporary Theories



# Organizational Theories

- Classical
- Human Relations
- Social Systems
- Open System



# Leadership Theories


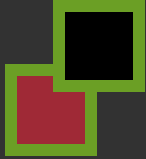
- Theory X Theory Y
- Trait Theories
- Behavior Theories







# Leadership Theories

- 
- Contingency Theories
  - Transformational and Charismatic Theories
  - Self Leadership Theories
- 


# Motivational Theories

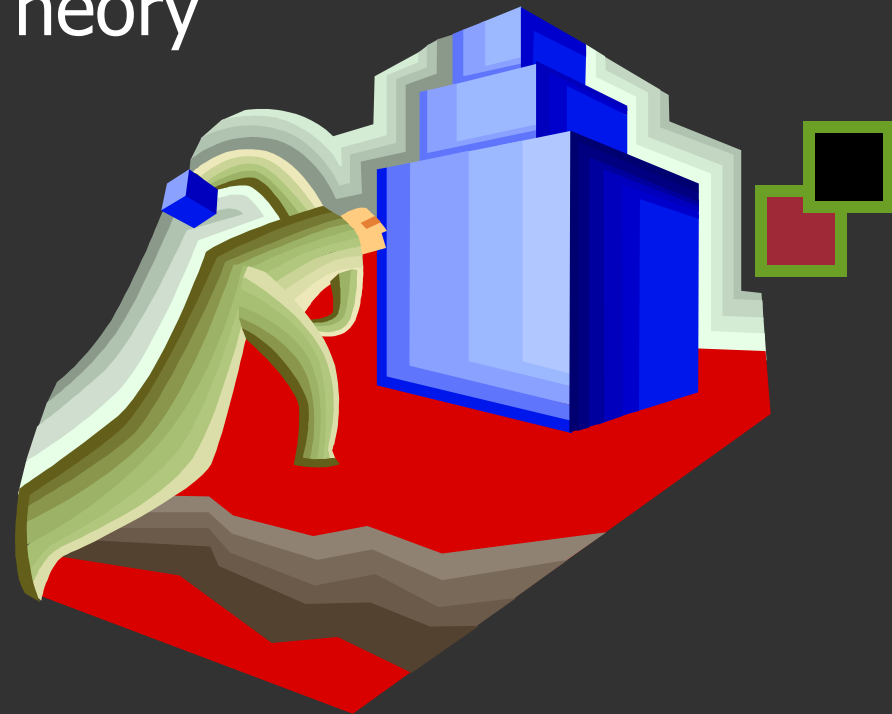
- Maslow's Hierarchy of Needs
- Herzberg's Two-Factor Theory

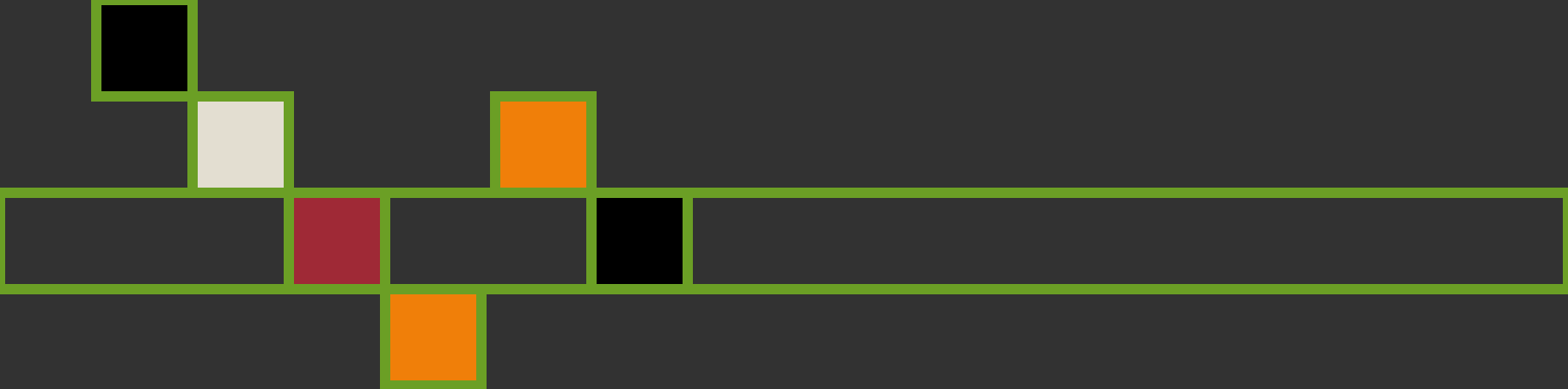




# Motivational Theories

- 
- House's Path-Goal Theory
  - Expectancy Theory
  - Equity Theory





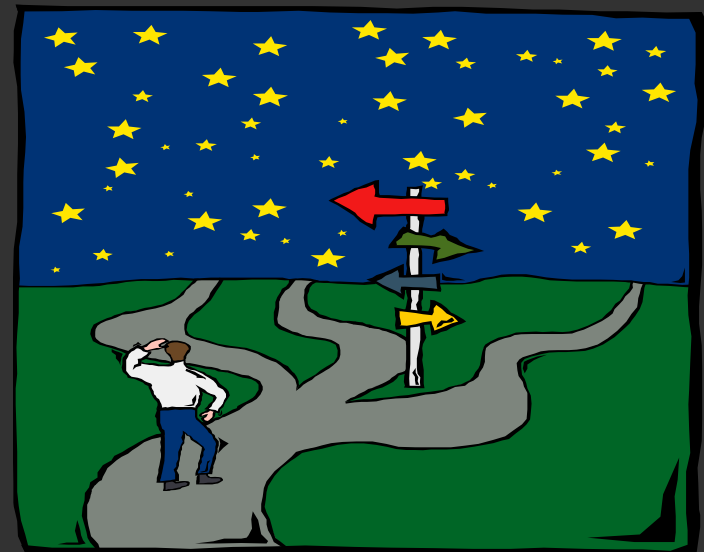
# Major Leadership Processes



Processes Used By School Leaders

# Major Leadership Processes

- Leadership
- Decision Making
- Communication
- Conflict Management
- Change





# Reference

- 
- Hoy, Wayne K. and Miskel, Cecil G. (1991). *Educational administration: Theory, research, practice*, 4<sup>th</sup> ed. New York: McGraw-Hill.
- 