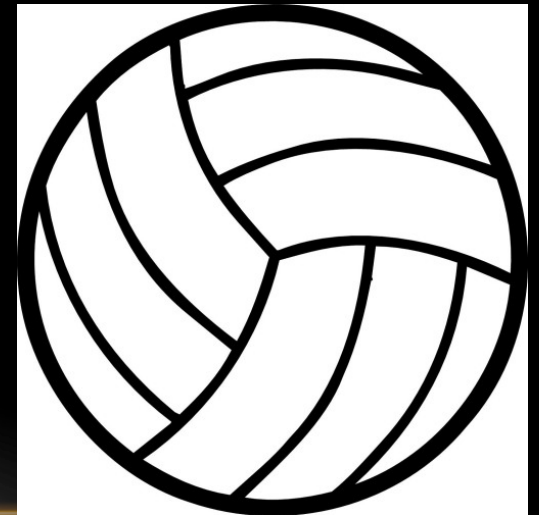
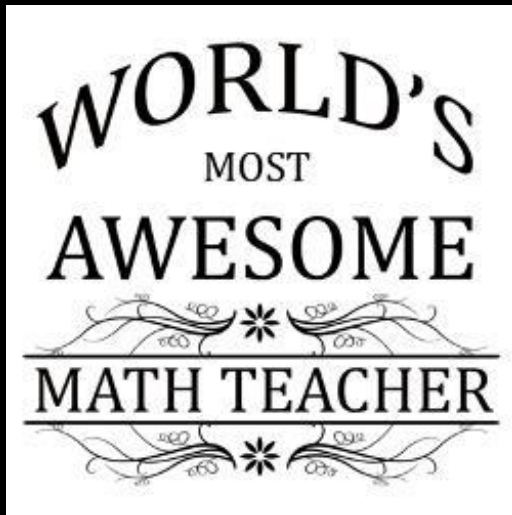


YOU'VE GRADUATED COLLEGE- NOW
WHAT?!

HIGH SCHOOL TEACHER + VOLLEYBALL COACH

- Starting salary with coaching supplement 45,364
- Monthly: 3780.33
- After Tax: 2691.59





UNIVERSITY OF GEORGIA

**MONTHLY
COLLEGE:
\$889.28**

$$\$26,208 * 4 = 104,832$$

Total in-state cost (with room and board)

$$104,832 - 16,000 \text{ Parental help/scholarships} = 88,832$$

Direct Subsidized Loan MAX: \$50,000	
N	120
I	3.76%
PV	50000
PMT	500.54
FV	0
PY/CY	12

Unsubsidized Loan	
N	120
I	3.76%
PV	38832
PMT	388.74
FV	0
PY/CY	12

2007 ACURA TSX

**MONTHLY CAR:
\$188.76**

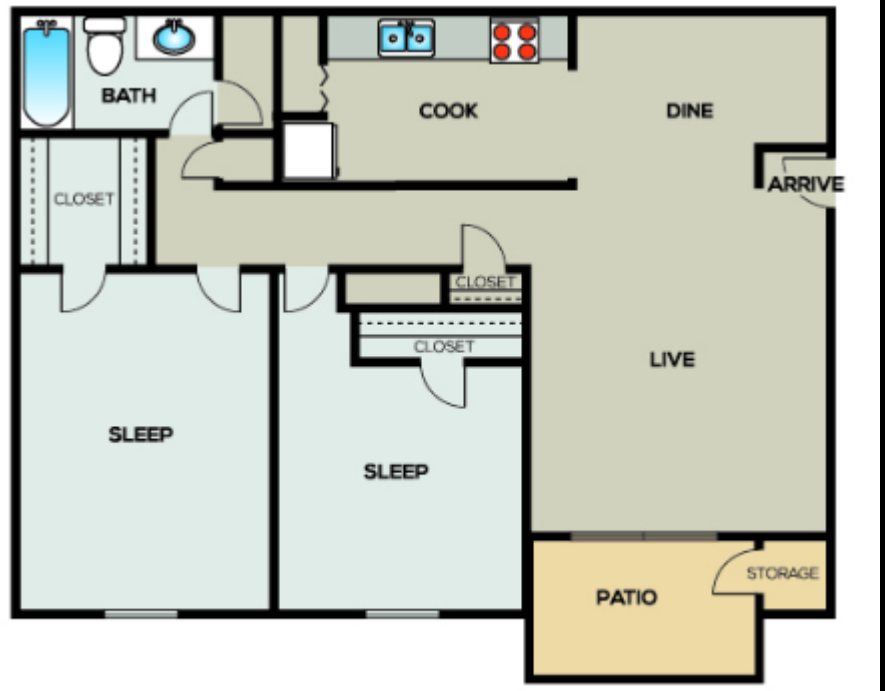
Bank of America	
N	60
I	2.64%
PV	10599
PMT	188.76
FV	0
PY/CY	12



APARTMENT- ASHFORD RETREAT

- 2 Bed/ 1 bath
- \$885

**MONTHLY APARTMENT:
\$442.50**



MONTHLY BUDGET:
\$1027.99

MONTHLY BUDGET

	MONTHLY COST	Where/How you determined the monthly cost
Cell Phone	\$60	(ATT) 3 GB advantage plan
Internet	\$30	(ATT) U-Verse plan (bundle discount)
Netflix	\$7.99	Personal Bill (ATT)
Water	\$45	GIVEN
Electricity/ Natural Gas	\$75	GIVEN
Car Insurance	\$100	GIVEN
Renters Insurance	\$30	GIVEN
Health Insurance	\$100	GIVEN
Gas (for car)	\$50	\$25 fill up twice a month
Food	\$400	How much food per week from grocery store bill (multiply by 4 weeks)
Entertainment/Personal	\$80	Going to movies, comic books, etc.
Savings	\$50	Saving for Vacation

WHAT'S LEFT OVER

INCOME	\$2,691.59
COLLEGE LOANS	-889.28
CAR	-188.76
APARTMENT	-442.50
MONTHLY EXPENSES	-\$1027.99
TOTAL	143.06

References

COLLEGE

<https://www.admissions.uga.edu/prospective-students/tuition-fees>

JOB

<http://www.cobbk12.org/centraloffice/hr/compensation/salary/2016-17/SalarySchedules/TeacherFY17.pdf>

<http://www.cobbk12.org/centraloffice/hr/compensation/salary/2016-17/SupplementInformation/SupplementsAthleticHeadCoachFY17.pdf>

CAR

<https://www.carmax.com/cars/acura/tsx/2007/13756879>

<https://www.bankofamerica.com/auto-loans/auto-loan-rates/>

APARTMENT

<http://www.apartments.com/ashford-retreat-marietta-ga/etkf05p/>

OTHER

<https://www.att.com/shop/wireless/data-plans.html>; <https://www.att.com/shop/internet/u-verse-internet.html>; <https://www.netflix.com/getstarted?locale=en-AU>