

Name: _____ Date: _____

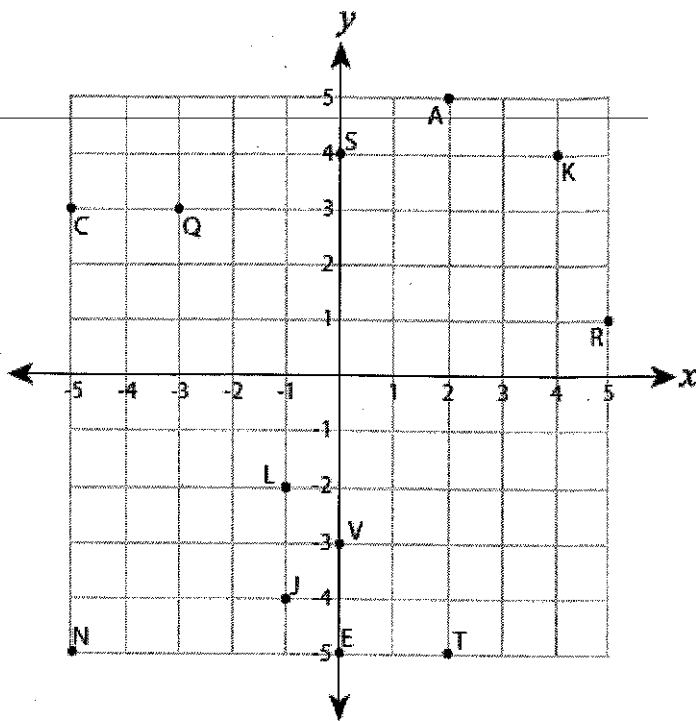
Review of graphing lines and coordinate points

A) Write the point that is located at each ordered pair.

1) $(-1, -4)$ J 2) $(-3, 3)$ Q

3) $(2, 5)$ A 4) $(5, 1)$ R

5) $(0, -5)$ E 6) $(-5, -5)$ N



B) Write the ordered pair for each point.

7) L $(-1, -2)$ 8) K $(4, 4)$

9) V $(0, -3)$ 10) T $(2, -5)$

11) C $(-5, 3)$ 12) S $(0, 4)$

C) Plot each point on the coordinate grid.

13) H $(-5, -3)$

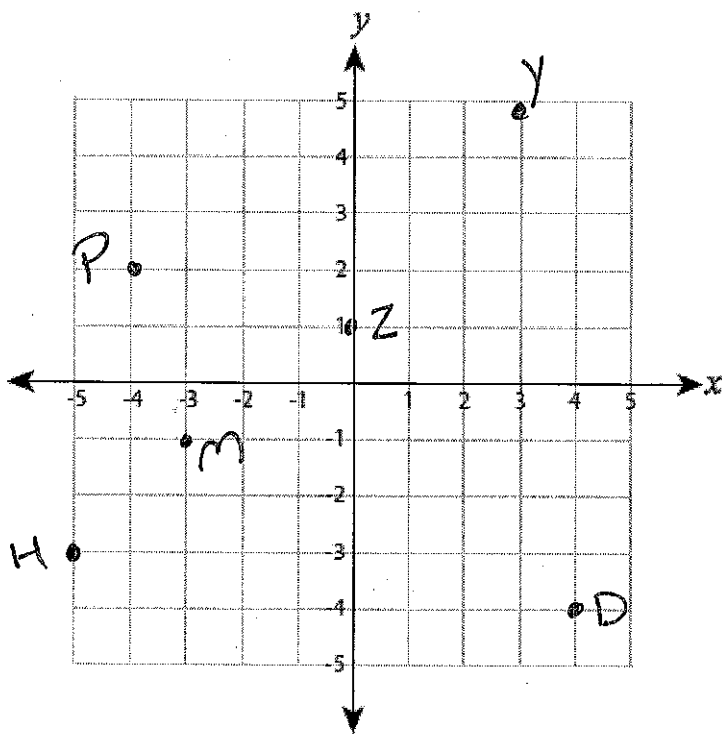
14) Z $(0, 1)$

15) D $(4, -4)$

16) P $(-4, 2)$

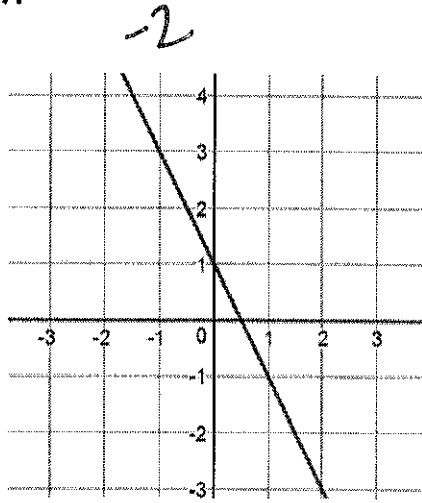
17) Y $(3, 5)$

18) M $(-3, -1)$

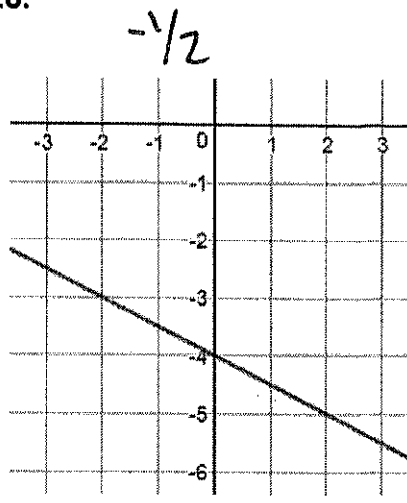


Find the slope

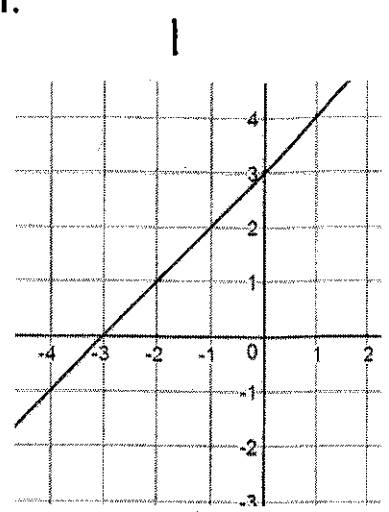
19.



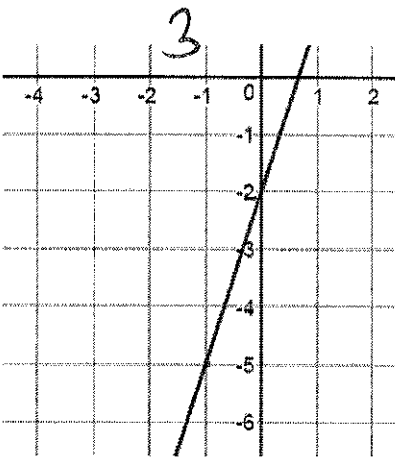
20.



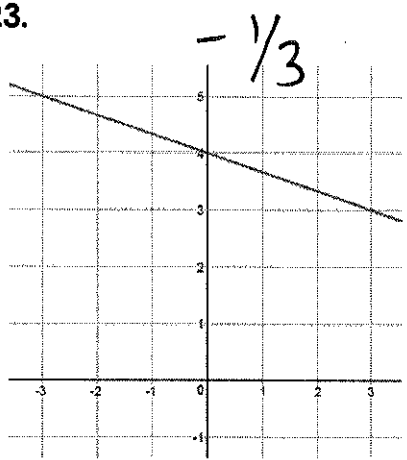
21.



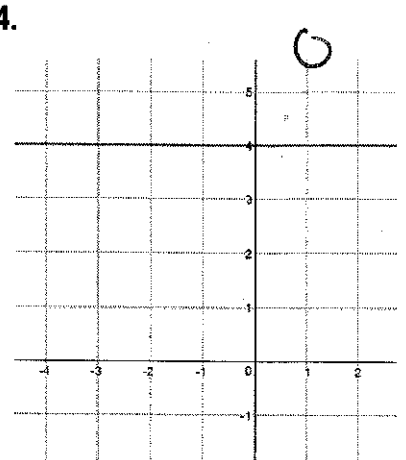
22.



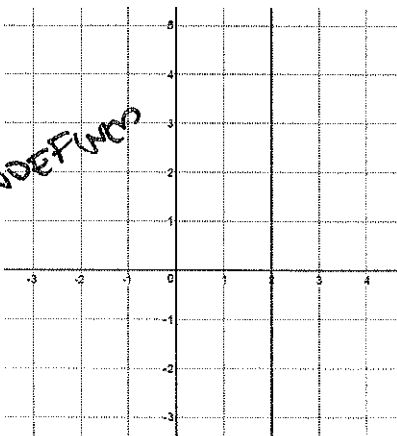
23.



24.



25.



26. (-3, 4) and (7, 4)

$$\frac{4-4}{3-7} = 0$$

27. (-2, -2) and (6, 2)

$$\frac{-2-2}{-2-6} = \frac{1}{2}$$

28. (0, 1) and (3, 4)

$$\frac{1-4}{0-3} = 1$$

29. (-3, 0) and (0, 9)

$$\frac{0-9}{-3-0} = 3$$

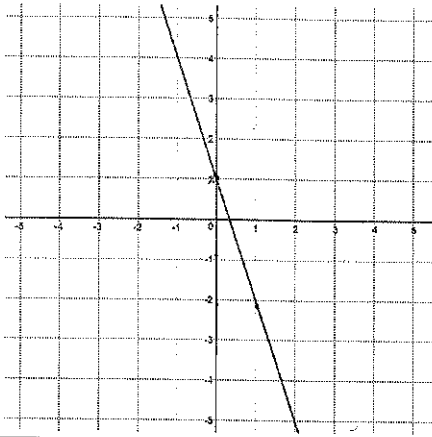
30. (3, -2) and (0, -1)

$$\frac{-2-(-1)}{3-0} = -\frac{1}{3}$$

Write the equation of the line given:

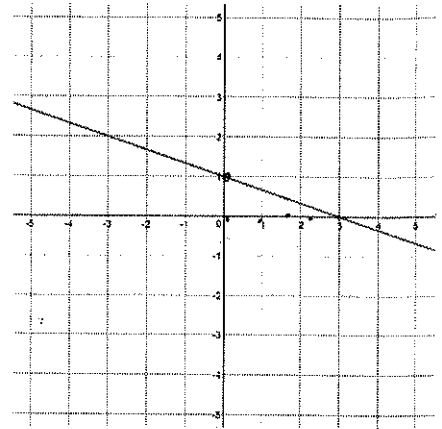
31.

$$y = -3x + 1$$



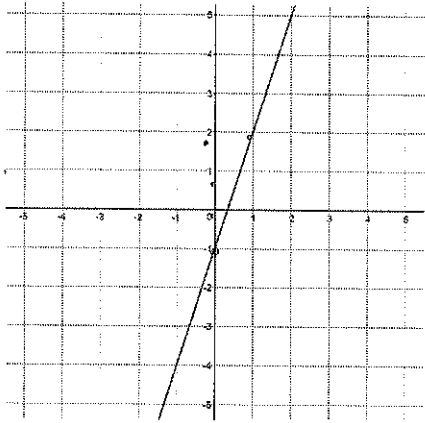
32.

$$y = \frac{1}{3}x + 1$$



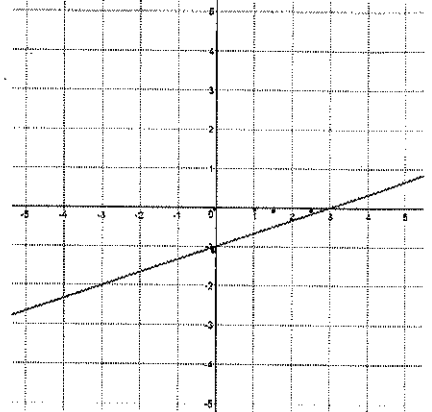
33.

$$y = 3x - 1$$



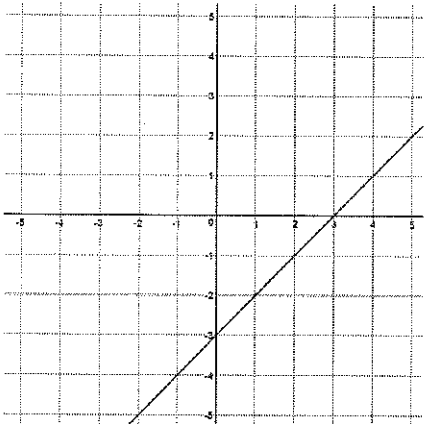
34.

$$y = \frac{1}{3}x - 1$$



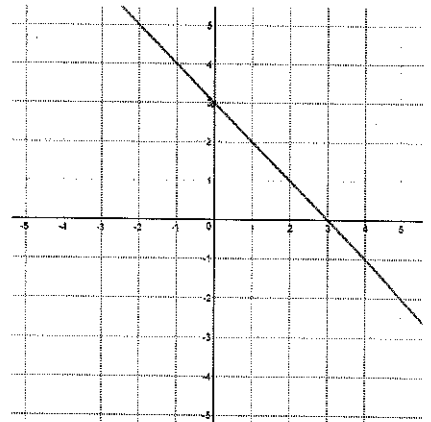
35.

$$y = x - 3$$



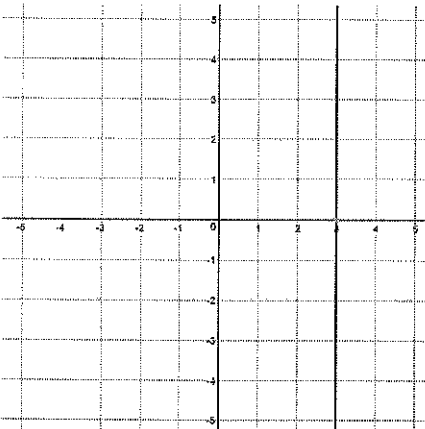
36.

$$y = -x + 3$$



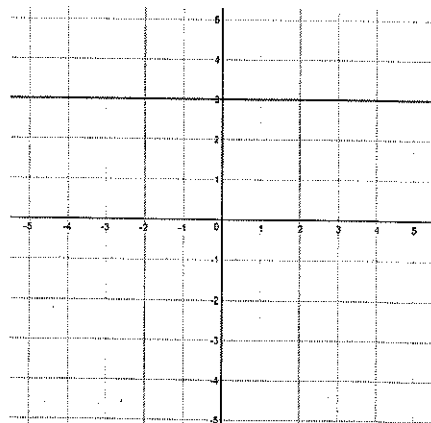
37.

$$x = 3$$



38.

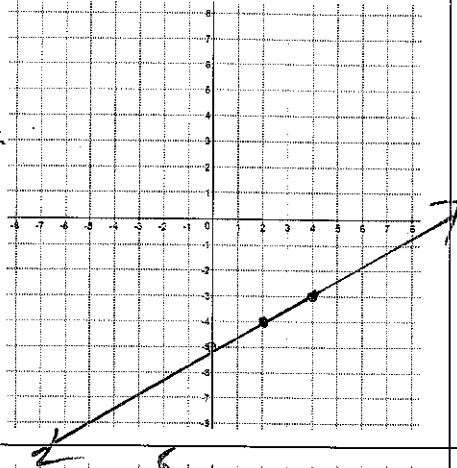
$$y = 3$$



Graph each equation

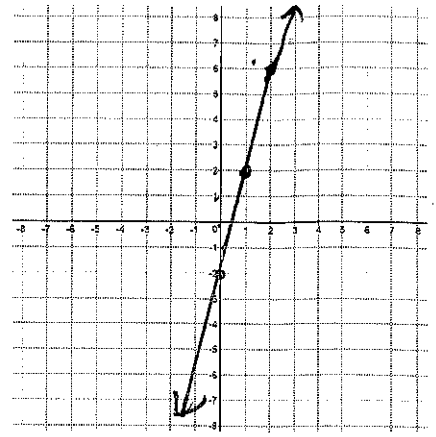
39.

$$y = \frac{1}{2}x - 5$$



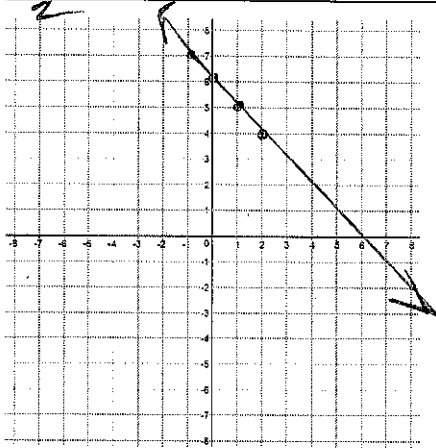
40.

$$y = 4x - 2$$



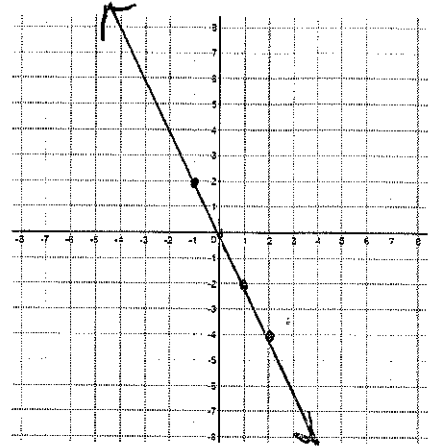
41.

$$y = -x + 6$$



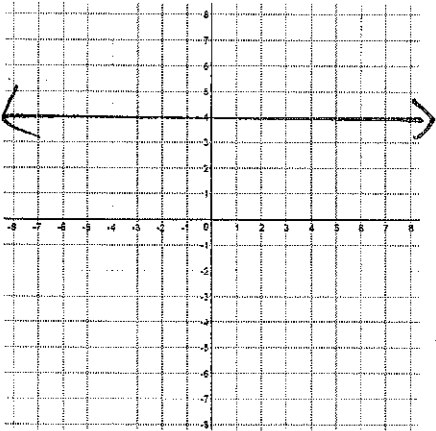
42.

$$y = -2x$$



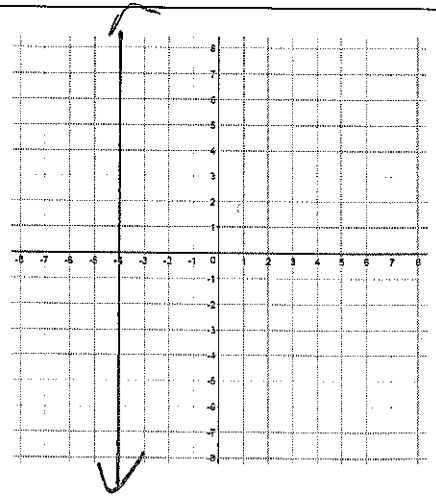
43.

$$y = 4$$



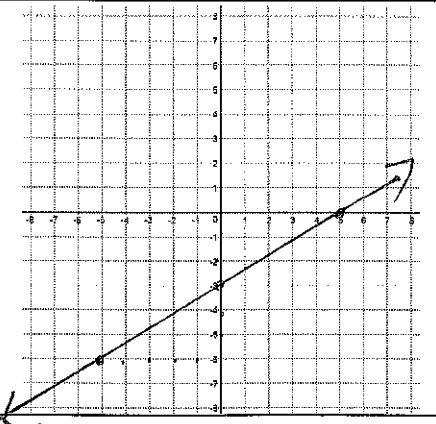
44.

$$x = -4$$



45.

$$y = \frac{3}{5}x - 3$$



46.

$$y = 4x + 4$$

