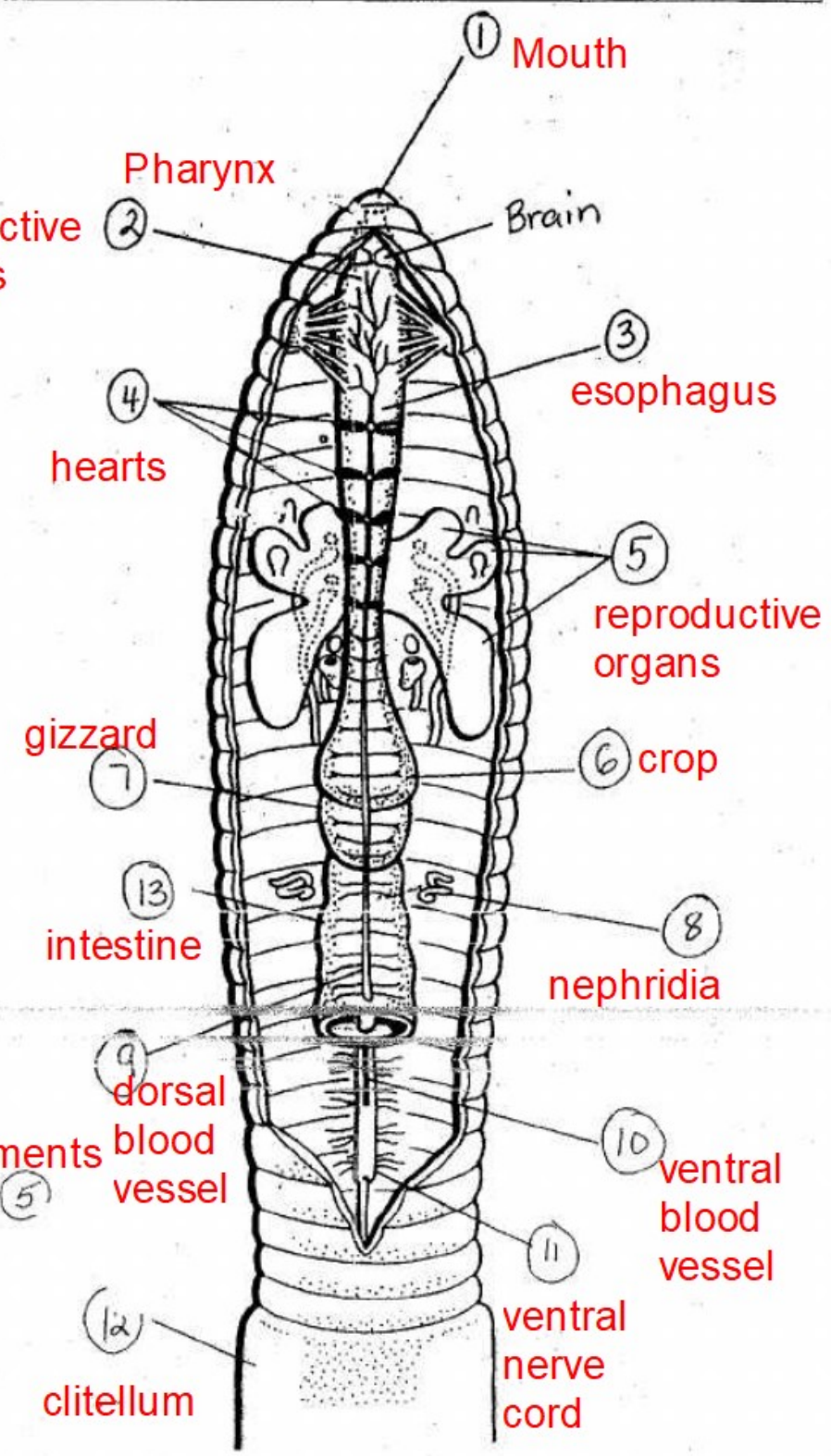
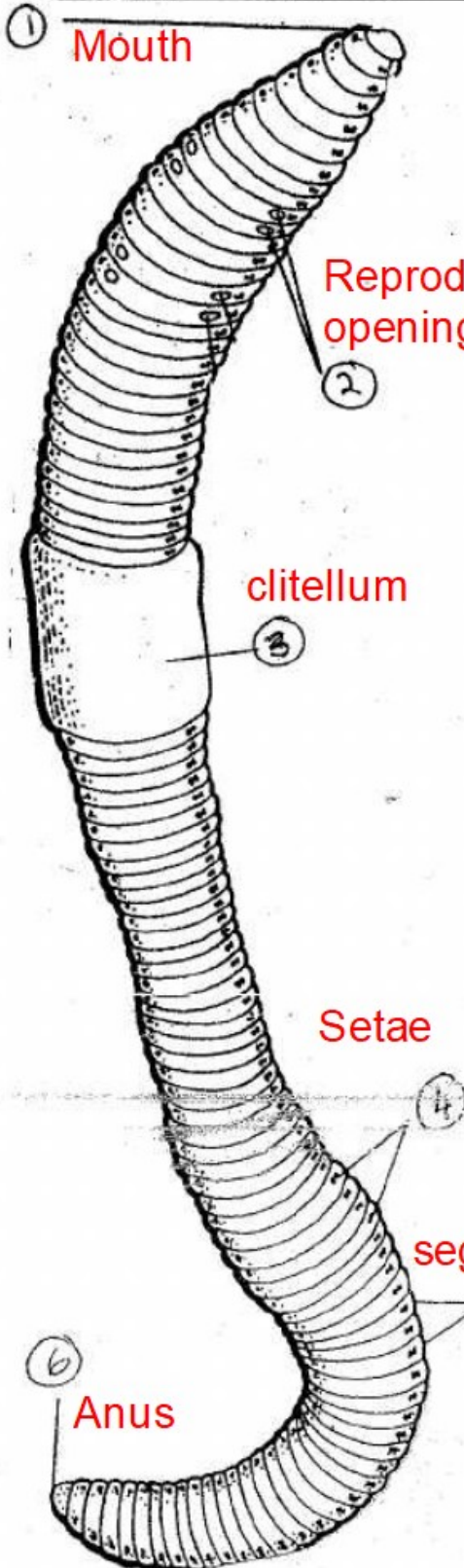


Site 2: More Earthworm Dissection

Use the word banks to label the parts of the external and internal anatomy of the earthworm:

External:		
Clitellum	Reproductive openings	Anus
Setae	Mouth	
Segments		

Internal:				
Mouth	Hearts	Crop	Gizzard	Clitellum
Brain	Nephridia	Intestine	Pharynx	Esophagus
Dorsal Blood Vessel	Reproductive Organs	Ventral Blood Vessel	Ventral Nerve Cord	



1 Mouth

2 Reproductive openings

3 Clitellum

4 Setae

5 Segments

6 Anus

2 Pharynx

4 hearts

7 gizzard

8 intestine

10 dorsal blood vessel

14 Clitellum

1 Mouth

3 Brain

4 esophagus

5 reproductive organs

6 crop

8 nephridia

10 ventral blood vessel

11 ventral nerve cord